



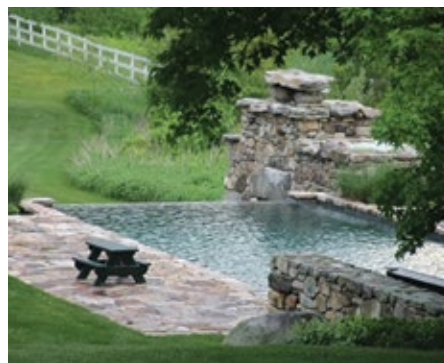
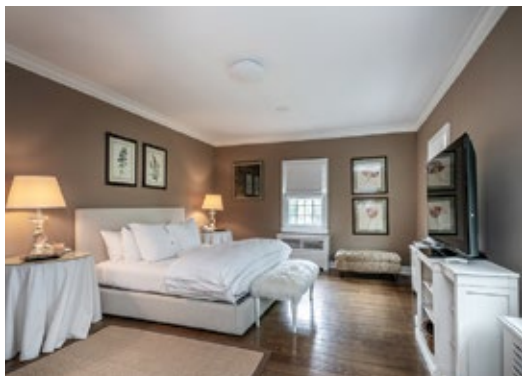
12-ACRE LAKEFRONT ESTATE

Goshen, Connecticut

KLEMM REAL ESTATE_{Inc}
LITCHFIELD COUNTY'S PREMIER BROKERS

12-Acre Lakefront Estate, Goshen, CT

Classic New England Estate. 100 ft. frontage directly on Woodridge Lake, with rights to build a boat dock, deck and cooking area at lake's edge and enjoy water activities and picturesque views. Discover the epitome of charm and grace in this magnificent home with 3 wood-burning fireplaces. 13 total rooms including 7 bedrooms with 7 full & 2 1/2 baths. With two ponds, open meadows and lawn, the property offers tranquility and privacy. Be immersed in a private outdoor oasis featuring an exquisite Gunite pool & spa with a mesmerizing 6' infinity waterfall. Enjoy cozy evenings by the outdoor stone fireplace. Bordering both Mohawk State Forest (4,000± Acres) and Wyantenock State Forest (4,000± Acres), the property seamlessly merges with the beauty of nature, providing unparalleled serenity and assuring forever preservation from development. Once home to five horses, the horse barn and paddocks add a touch of rustic charm. Ideal for horse enthusiasts. Ski at nearby Mohawk Mountain Ski Resort (with Night Skiing), a mere 8-minute drive. Rare Offering with Potential Waterfront Building Site on Quiet Country Road yet, 10 minutes to Litchfield Town Center and its world class restaurants, shops and services.



Property Features

- 100' on Woodridge Lake
- Infinity Pool with Spa
- Outdoor Fireplace
- Two Large Ponds
- Borders Preserved Land
- Barn with Paddocks
- Potential Lakefront Building Site
- Rights to Build: Dock, Deck & Cooking Area at Lake's Edge

#1 for Selling & Renting Fine Country Properties!

KLEMM REAL ESTATE Inc
LITCHFIELD COUNTY'S PREMIER BROKERS

Lakeville/Salisbury 860.435.6789 > Litchfield 860.567.5060 > New Preston 860.868.0505
Roxbury 860.354.3263 > Sharon 860.364.5993 > Washington Depot 860.868.7313 > Woodbury 203.263.4040

klemmrealestate.com

Property Data

430 Milton Road
Goshen, CT

13	7	7/2	5,193	12±
RMS	BEDS	BATHS	SQFT	ACRES

Price: Upon Request

Listing Agents: Carolyn Klemm
860.868.7313 Ext. 112

Peter Klemm
860.868.7313 Ext. 124

All Data to be confirmed by Buyer.

Any buyer/lessee must satisfy himself by inspections or otherwise as to correctness of any information – given, written or verbal. No information may be relied upon as fact, and is given entirely without responsibility of Klemm Real Estate, Inc., its associates or seller/lessor. Photographs show only certain parts of property. Any measurements or distances are approximate only. Offering subject to error, omission, changes or withdrawal without notice.

